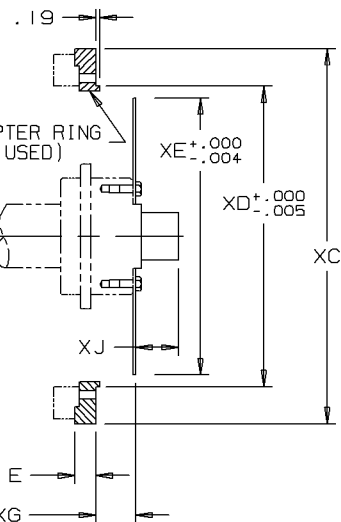


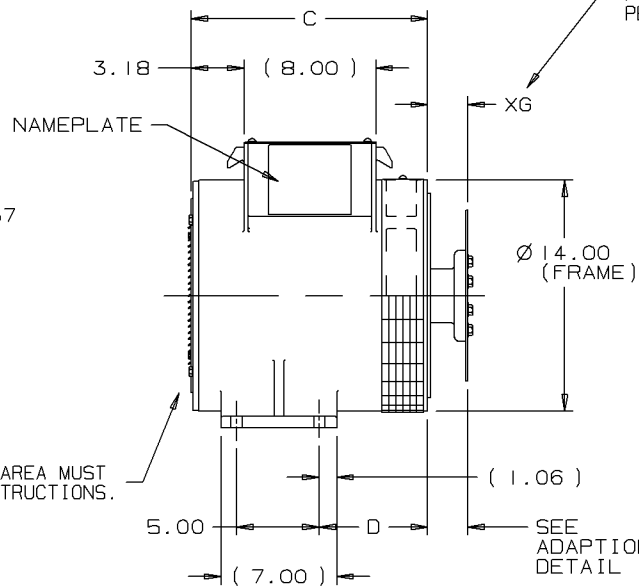
AIR INTAKE - THIS AREA MUST BE FREE OF ANY OBSTRUCTIONS.

"J" DIA. "H" HOLES
EQUALLY SPACED

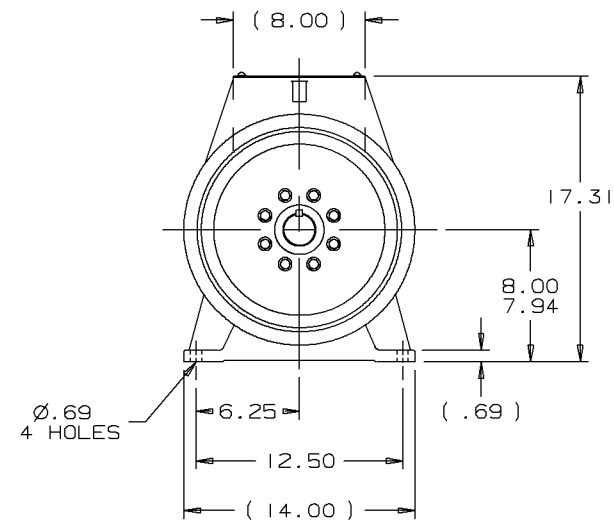
"M" DIA. "K" HOLES
EQUALLY SPACED



U.S. CUSTOMARY : CAD LEVELS 200-449
METRIC DIMENSIONS : CADD LEVELS 450-499




NOTE: .06 DEVIATION FROM THIS POSITION IN EITHER DIRECTION PERMITTED.



"M" DIA. "K" HOLES
DELCO ONLY

MTG CODE	ADAPTER								DRIVE DISC								
	SAE	H	J	XB	XC	XD	E	B	SAE	K	M	XE	XF	XG	XJ	C	D
I	#5	8	.41	13.12	14.00	12.375	-	22 1/2"	#6 1/2	6	.34	8.499	7.88	1.19	.50	14.31	6.56
Q	#5	8	.41	13.12	14.00	12.375	-	22 1/2"	#7 1/2	8	.34	9.499	8.75	1.19	.50	14.31	6.56
R	#5	8	.41	13.12	14.00	12.375	-	22 1/2"	#8	6	.41	10.374	9.62	2.44	-.75	14.31	6.56
V	#4	12	.41	15.00	15.88	14.250	-	15°	#6 1/2	6	.34	8.499	7.88	1.19	.50	14.31	6.56
G	#4	12	.41	15.00	15.88	14.250	-	15°	#7 1/2	8	.34	9.499	8.75	1.19	.50	14.31	6.56
C	#4	12	.41	15.00	15.88	14.250	-	15°	#8	6	.41	10.374	9.62	2.44	-.75	14.31	6.56
Y	#4	12	.41	15.00	15.88	14.250	-	15°	#10	8	.41	12.374	11.62	2.12	-.44	14.31	6.56
X	#3	12	.42	16.88	17.75	16.125	.56	15°	#8	6	.41	10.374	9.62	2.44	-1.31	14.87	7.12
D	#3	12	.42	16.88	17.75	16.125	.56	15°	#10	8	.41	12.374	11.62	2.12	-1.00	14.87	7.12

4		METRIC DIMENSIONS ADDED PER MKT REQ	DA	✓ SURFACE ROUGHNESS UNLESS NOTED OTHERWISE	UNLESS OTHERWISE SPECIFIED DIMENSIONS ARE IN INCHES TOL ON XX+.06 XXX+.005 XXXX+.0005 ANGLES*		
3	5-17-90	DRAWING No. WAS SS526121	PR	MATL SPEC	3249A/3316A		
2	10-11-89	TABULATED *XJ* DIM REV'D ECN 05745	PR	FINISH	 WAUSAU, WISCONSIN 54401		
REV	DATE	CHANGE	NAME	PART NAME OUTLINE 250 FR. IBRG SER/MAC -STD FOOT			DRWG NO B-771001-0A